

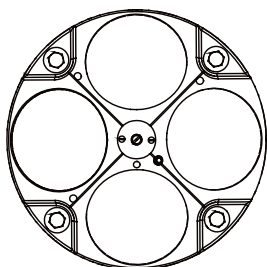
WinSC Quick Reference Card

Deployment Checklist

- ❑ Test the ADCP using *WinSC*
- ❑ Seal the ADCP for deployment
 - ❑ Install new O-rings; use silicone lubricant
 - ❑ Use fresh desiccant (2 bags) inside ADCP
 - ❑ Install and connect the batteries
 - ❑ Check Recorder PC card is installed
- ❑ Visually inspect the ADCP
 - ❑ Check the transducer head condition
 - ❑ All mounting hardware installed
 - ❑ Transducer faces clean and free from defects
- ❑ Verify the compass alignment using *WinSC*; if necessary, re-calibrate
- ❑ Check recorder status using *WinSC*
- ❑ Are biofouling precautions needed?
- ❑ Verify battery and recorder space requirements
- ❑ Install the dummy plug; use silicone lubricant

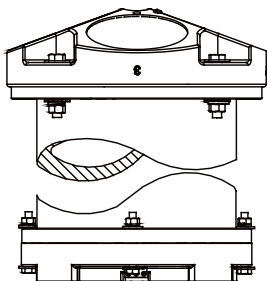


VISUALLY INSPECT THE ADCP



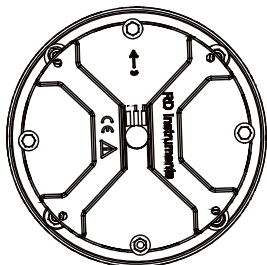
URETHANE TRANSDUCER FACES
REMOVE BARNACLES AND
CHECK FOR CRACKS

TRANSDUCER HEAD
CHECK O-RINGS
AND MOUNTING
HARDWARE ARE
INSTALLED



HOUSING
CHECK FOR
CRACKS

**ELECTRONICS AND
BATTERY PACKS**
CHECK MEMORY CARD
AND BATTERIES ARE
INSTALLED



END-CAP
CHECK O-RINGS AND
MOUNTING HARDWARE
ARE INSTALLED

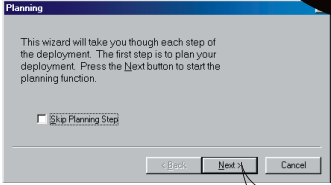
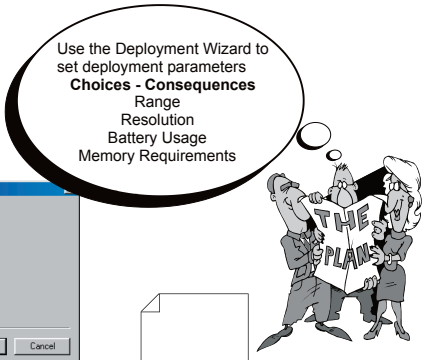
I/O CABLE CONNECTOR
INSTALL DUMMY PLUG

WorkHorse Care

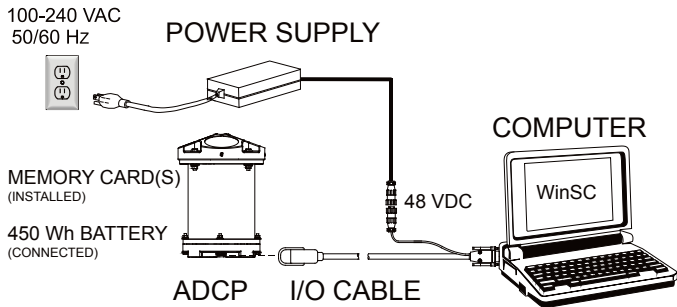
This section contains a list of items you should be aware of every time you handle, use, or deploy your Sentinel ADCP. *Please refer to this list often.*

- Never set the transducer faces on a hard or rough surface. The urethane faces may be damaged.
- Do not expose the transducer faces to prolonged sunlight. The urethane faces may develop cracks. Cover the transducer faces on the WorkHorse if it will be exposed to sunlight.
- Do not expose the I/O connector to prolonged sunlight. The plastic may become brittle. Cover the connector on the WorkHorse if it will be exposed to sunlight.
- Do not scratch or damage the O-ring surfaces or grooves. All O-ring grooves and surfaces must be inspected for scratches or damages on every re-assembly. Do not risk a deployment with damaged O-ring surfaces.
- A light amount of DC-111 lubricant on the underwater-connect cable and dummy plug connector pins (rubber portion only) will make them easier to connect or remove.
- Always remove the retaining strap on the underwater-connect cable and dummy plug when disconnecting them. Failure to do so will break the retainer strap.
- Do not lift or support a WorkHorse by the external I/O cable. The connector will break.
- Read the Maintenance book for details on WorkHorse re-assembly. Make sure the housing assembly O-rings stay in their groove when you re-assemble the WorkHorse. Tighten the hardware as specified. **Loose, missing, stripped hardware, or damaged O-rings can cause the WorkHorse transducer to flood.**
- WorkHorse Sentinel batteries are shipped inside the ADCP but not connected. **Connect the battery and seal the ADCP before deployment.**
- Align the compass whenever the battery packs are replaced.
- The AC power adapter is not designed to withstand water. Use caution when using on decks in wet conditions.
- Avoid using ferro-magnetic materials in the mounting fixtures or near the WorkHorse. They affect the compass.

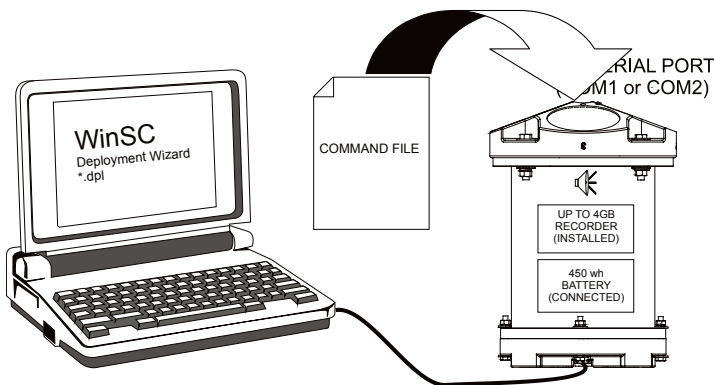
Using WinSC for Self-Contained Deployments



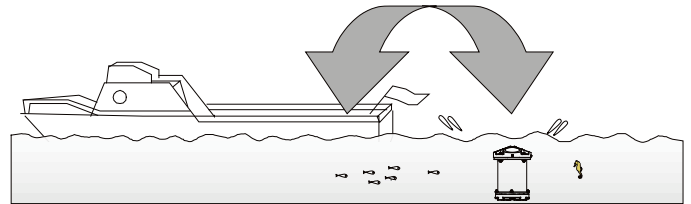
Step 1. Use WinSC to create or open a deployment file. Use the Deployment Wizard to plan the deployment. Make choices; see the consequences for the entire deployment.



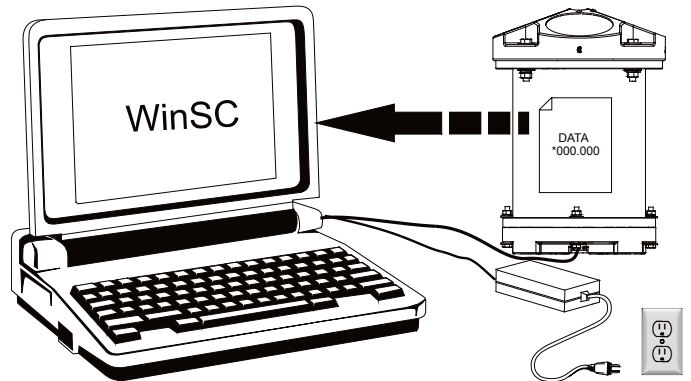
Step 2. Use the Deployment Checklist (other side) to verify that the ADCP is ready for the deployment. Use the Deployment Wizard to test the ADCP, verify the compass calibration, and set the ADCP's clock.



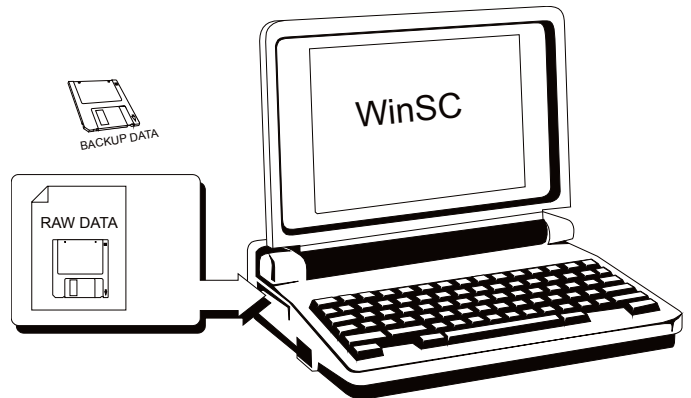
Step 3. Use WinSC's Deployment Wizard to send the deployment commands to the ADCP. View the deployment log file. This file shows all of the commands sent to the ADCP and the ADCP's response. You should hear the ADCP "beep" after each ping if it is set to deploy immediately. Disconnect the I/O cable and install the dummy plug.



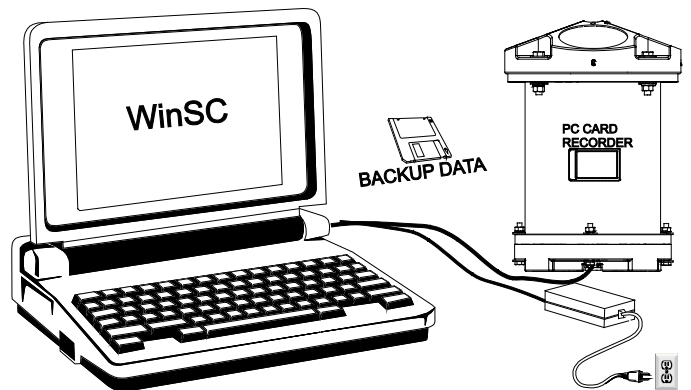
Step 4. Deploy and recover the ADCP. Data files are *.SCL (deployment log file) and *000.000 (raw data).



Step 5. Use WinSC to recover data from the recorder. The data will be copied to your computer's hard drive.



Step 6. Always backup your data. Use WinSC to view the data.



Step 7. Use WinSC to erase the recorder and prepare the ADCP for another deployment.