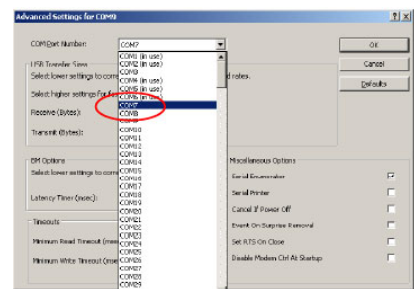
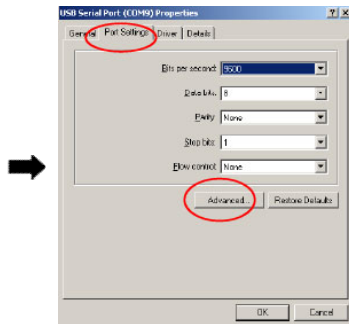
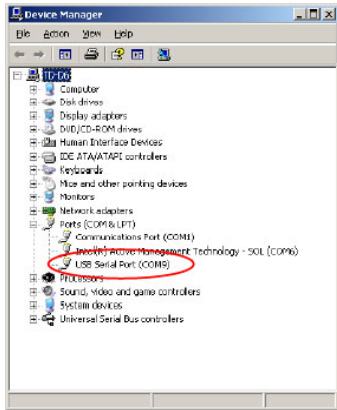


Connect the cable to the computer. **NOTE: Please be sure to not have the DataBank attached at this time.** Once the cable has been attached you should be prompted that new hardware has been found -- let the driver install automatically. **DO NOT DIRECT IT MANUALLY TO THE CD OR PROGRAM.** Once the driver is installed, you may connect the DataBank and install the GUI (refer to [instruction document S-0112](#)) for communicating with the DataBank.

**NOTE: If you connect the DataBank and you get the message "DataBank not found" the computer may have assigned the USB to a COM Port greater than COM8. The DataBank only searches ports 0-8, and it is best to use 5-8 (inclusive) for USB. Please follow the directions below to reassign the USB.**

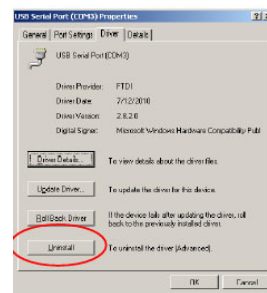
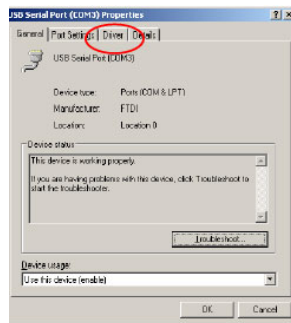
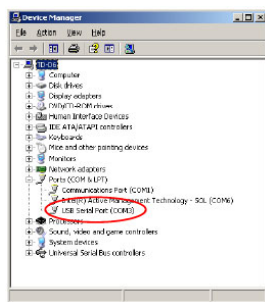


With only the USB cable attached to the computer (do not have it connected to the DataBank), open the Device Manager for Windows and establish which port it is connected to.

Select the port and "right click" to open the Properties window. Select the Port Setting tab and select the Advanced button.

Use the pull down menu to assign a new COM Port and select OK.

**NOTE: If the drivers did not install correctly or the message, "your hardware is installed and ready to use" didn't appear, please follow the directions below which will remove the USB and allow you to try automatically installing the drivers again.**



With only the USB cable attached to the computer (do NOT have it connected to the DataBank), open the Device Manager for Windows and establish which port it is connected to.

Select the port and "right click" to open the Properties window. Select the Driver tab.

Select Uninstall, to uninstall the driver.

Select OK to uninstall the driver and disconnect the USB cable from the computer. Reconnect the cable to the computer using the instructions above.

**Note: If you are unable to get the driver to install on your computer or continue to have issues, please refer to this page for the most current VCP drivers: <http://www.ftdichip.com/Drivers/VCP.htm>**