

SeaFET™ V2

Ocean pH Sensor

The SeaFET™ V2 Ocean pH Sensor is an ion selective field effect transistor (ISFET) type sensor for accurate long-term pH measurements in seawater.

Features

- Solid state ISFET sensor
- AgCl external reference electrode
- Calibrated in natural seawater
- Internal logging and scheduling
- Internal battery pack

Applications

- Ocean Acidification research
- Coral reef physiology and sensitivity analyses
- Near-shore biological research
- Environmental monitoring

Flexible Operating Modes

- Autonomous Sampling – Samples at a predetermined interval
- Delayed Autonomous Sampling – Begins sampling a predetermined date and time, at a predetermined interval
- Polled Sampling – Samples upon receipt of an RS-232 command



Optical

Measurement Range	6.5 to 9.0 pH
Initial Accuracy	± 0.05 pH
Precision	0.004 pH
Stability	0.003 pH/month

Environmental

Operating Temperature Range	0 to 50 °C
Storage Temperature Range	2 to 55 °C
Salinity Range	20 to 40 psu
Depth Range	50 m

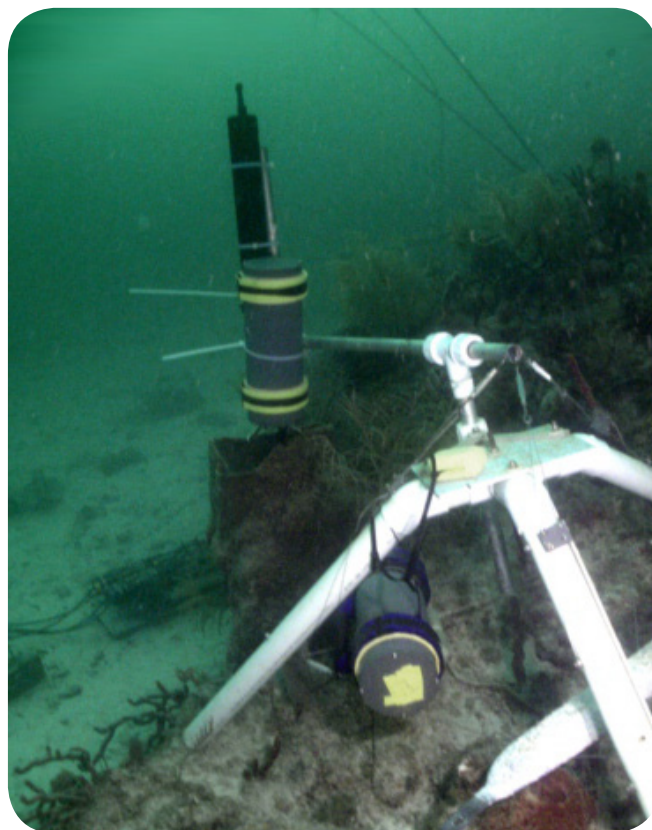
Electrical

Supply Voltage Range	6 to 18 VDC
Power Consumption: Sampling	0.55 Joules/Sample
Power Consumption: Sleep	0.5 mW
Batteries	12 x 1.5 V Alkaline D-Cells



Mechanical

Dimension: Housing	508 mm L x 114 mm D (20.00 in x 4.48 in)
Dimension: Overall	549 mm L x 114 mm D (21.63 in x 4.48 in)
Weight in air	5.4 kg (w/batteries)
Weight in water	0.1 kg (w/batteries)
Displacement	5300 cm ³
Materials	PVC



Communication

External Connector	MCBH8M
Telemetry	RS-232
Storage	32 Mb (Over 1,240,000 samples)



Specifications subject to change without notice. ©2014 Sea-Bird Scientific. All rights reserved. Rev. June 2018.

Sea-Bird Scientific
+1 425-643-9866
sales@seabird.com
www.seabird.com