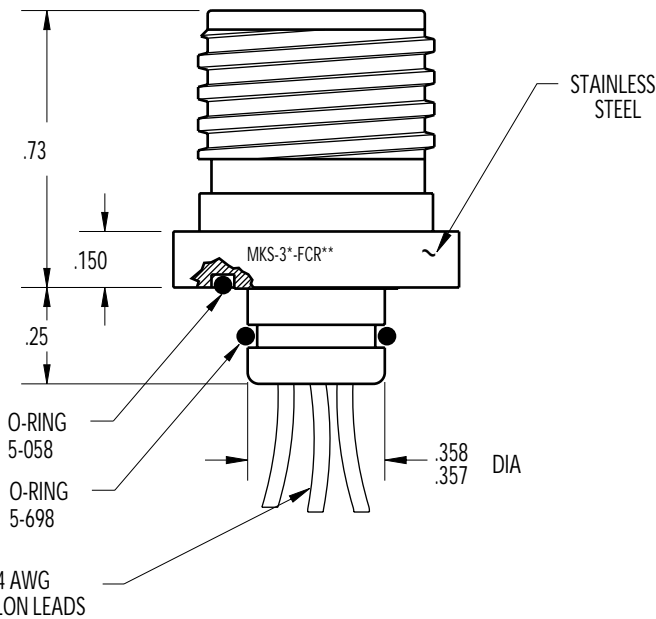
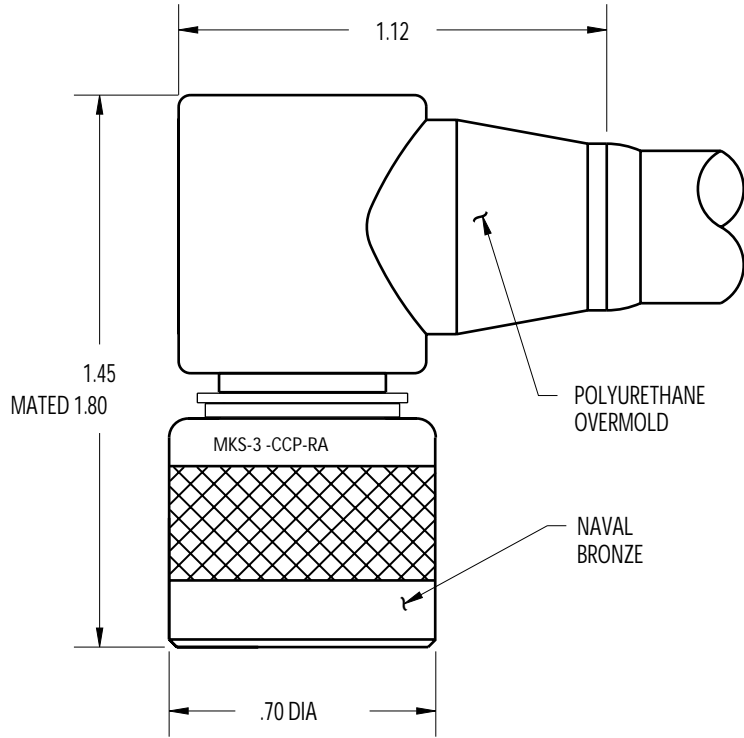
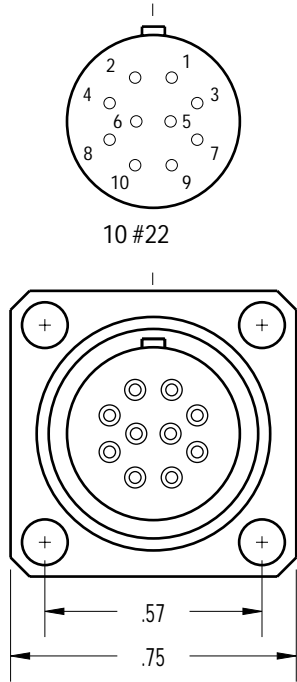
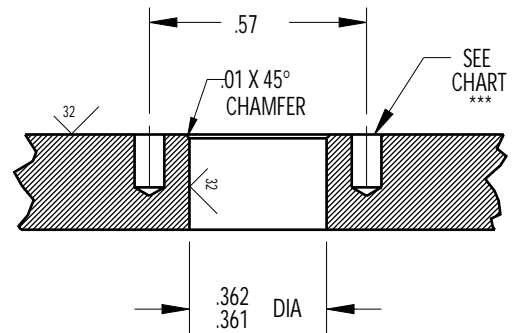


CONTACT CONFIGURATION  
(BCR FACE VIEW)



MOUNTING INSTRUCTIONS



MOUNTING TORQUE FOR BCR	not to exceed 50 in/lbs	MATED PRESSURE RATING (psi)	10,000
-------------------------	-------------------------	-----------------------------	--------

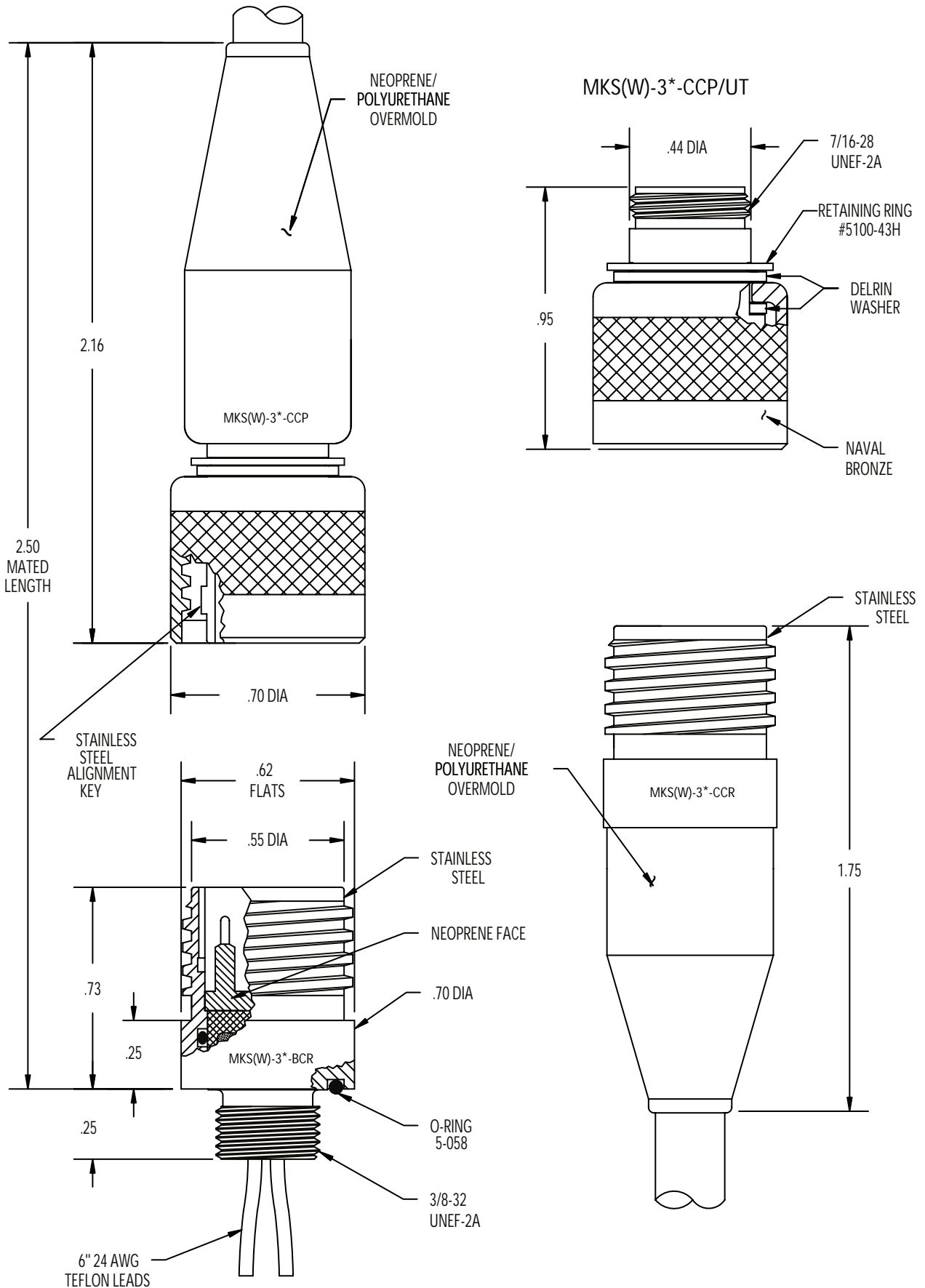
See pg. 9580 for SCP/SCR information.

NOTE: CCP is not terminated to cable unless specified.

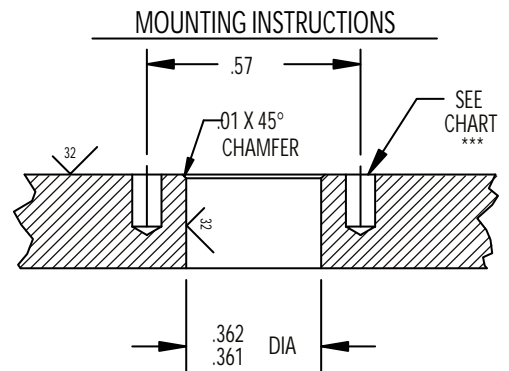
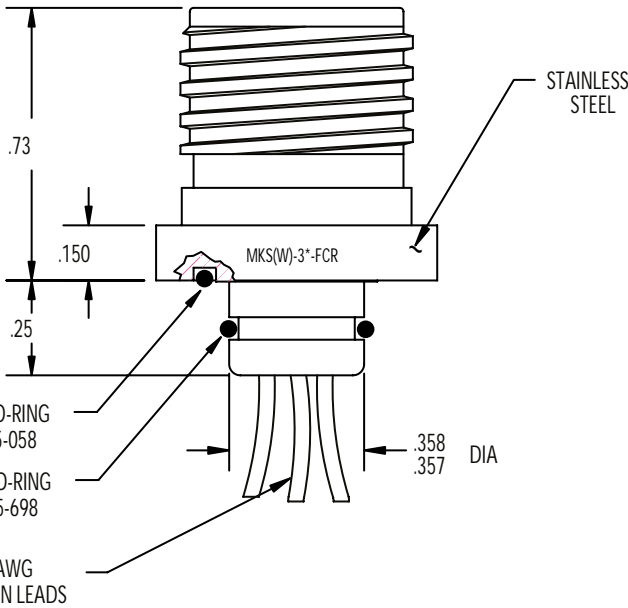
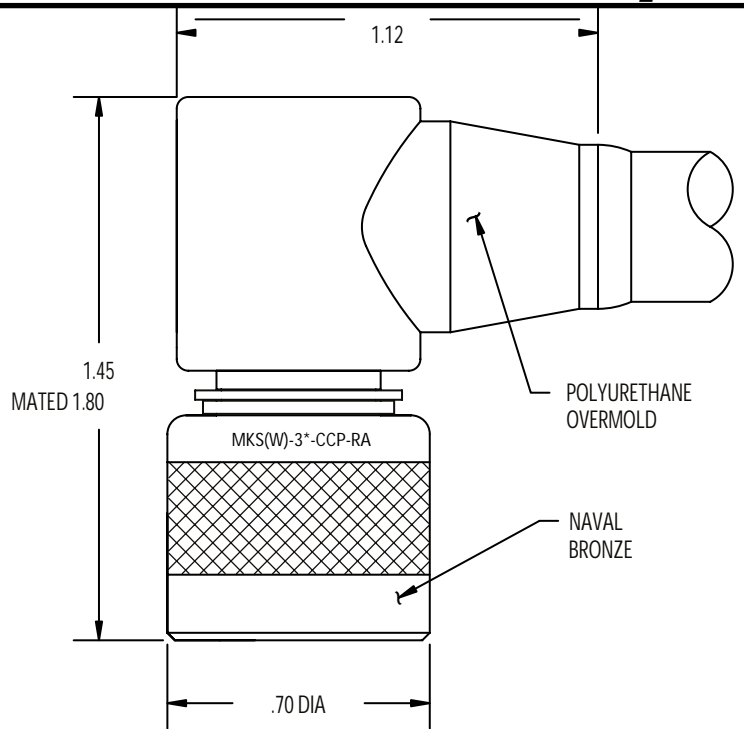
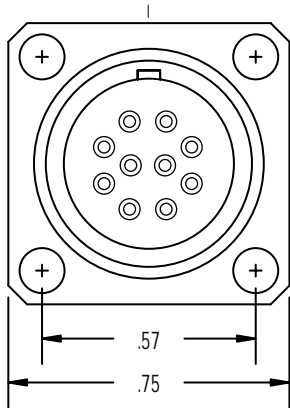
\* Please specify number of contacts.

\*\* Internal assembly same as MKS-3\*-BCR (facing page).

\*\*\* Blind tapped hole not to penetrate bulkhead, minimum full thread depth 2 times bolt diameter.



CONTACT CONFIGURATION  
(BCR FACE VIEW)



MOUNTING TORQUE FOR BCR	not to exceed 50 in/lbs	MATED PRESSURE RATING (psi)	10,000
-------------------------	-------------------------	-----------------------------	--------

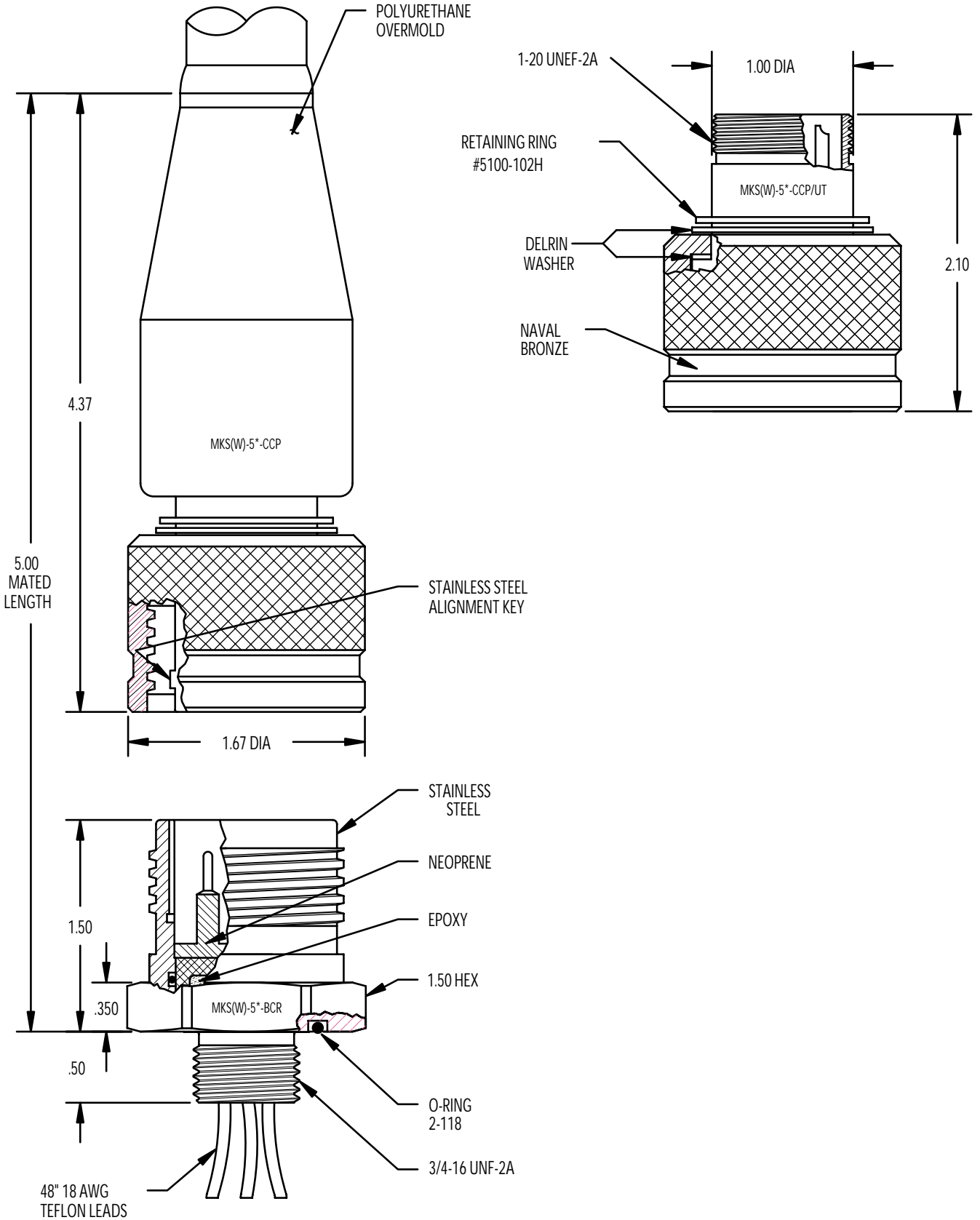
See pg. 9580 for SCP/SCR information.

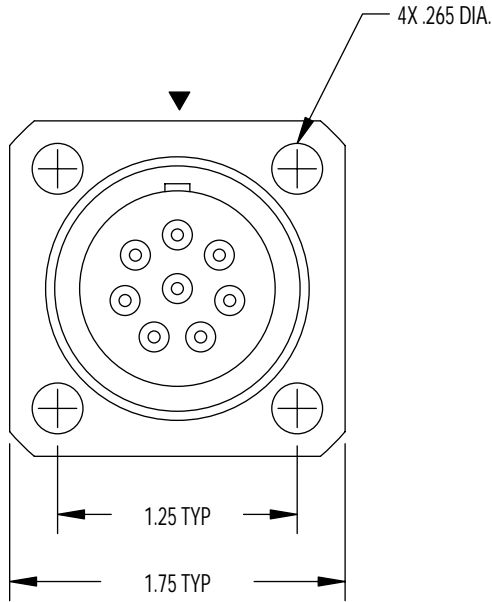
NOTE: CCP is not terminated to cable unless specified.

\* Please specify number of contacts.

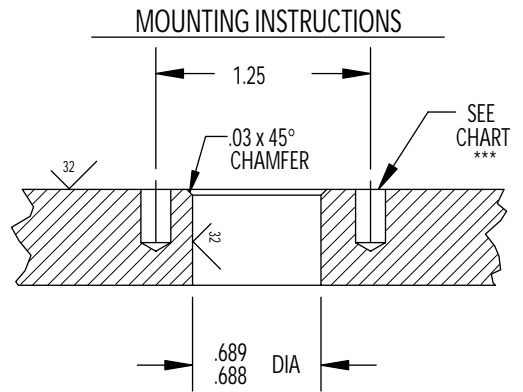
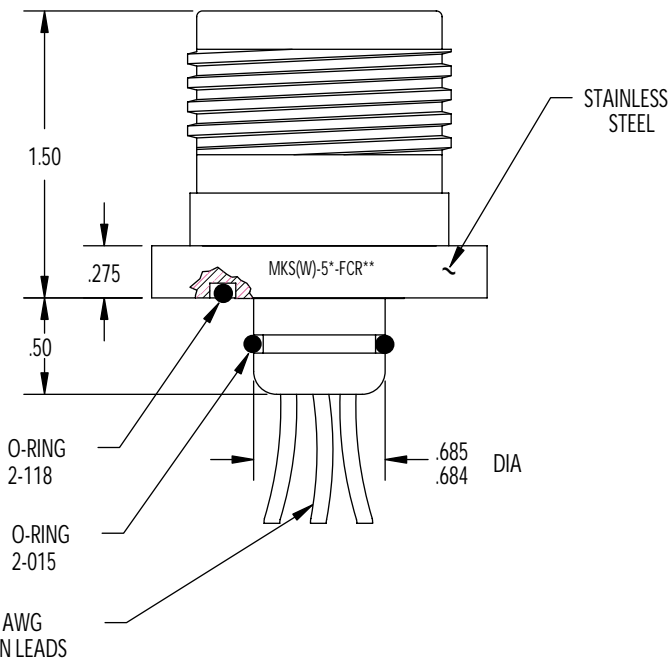
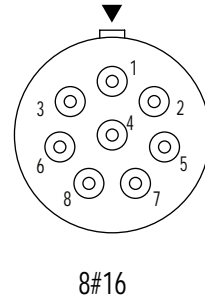
\*\* Internal assembly same as MKS(W)-3\*-BCR (facing page).

\*\*\* Blind tapped hole not to penetrate bulkhead, minimum full thread depth 2 times bolt diameter.





CONTACT  
CONFIGURATION  
(BCR FACE VIEW)



MOUNTING TORQUE FOR BCR	not to exceed 165 in/lbs	MATED PRESSURE RATING (psi)	10,000
-------------------------	--------------------------	-----------------------------	--------

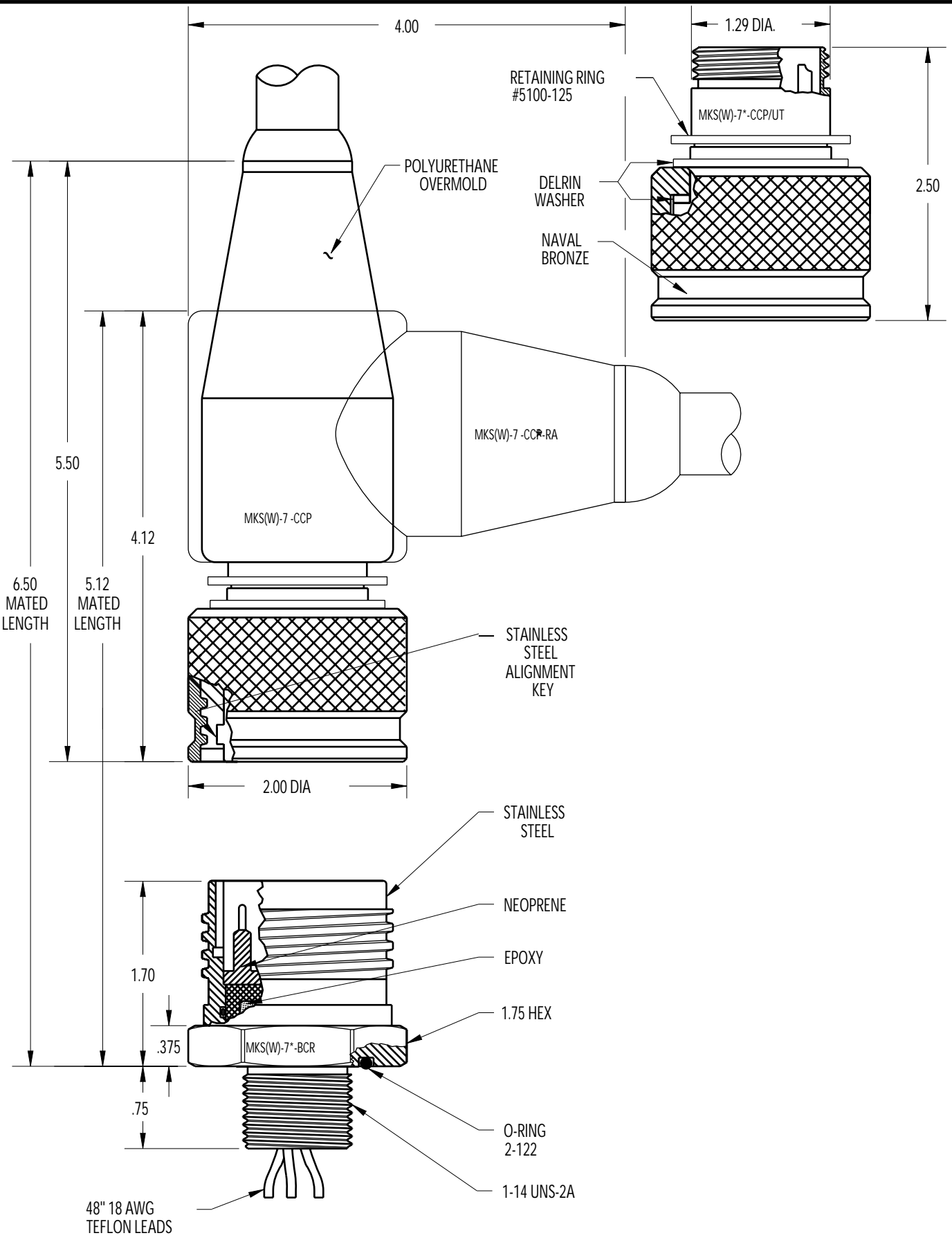
See pg. 9580 for SCP/SCR information.

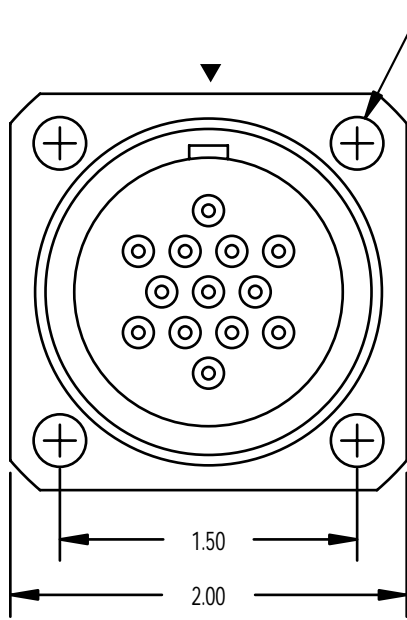
NOTE: CCP is not terminated to cable unless specified.

\* Please specify number of contacts.

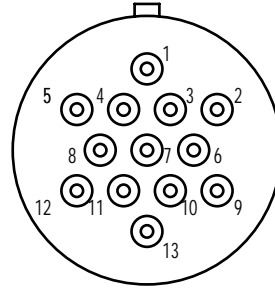
\*\* Internal assembly same as MKS(W)-5\*-BCR (facing page).

\*\*\* Blind tapped hole not to penetrate bulkhead, minimum full thread depth 2 times bolt diameter.

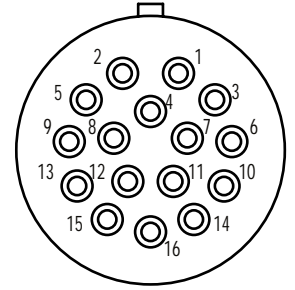




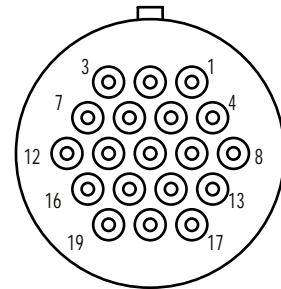
CONTACT  
CONFIGURATION  
(BCR FACE VIEW)



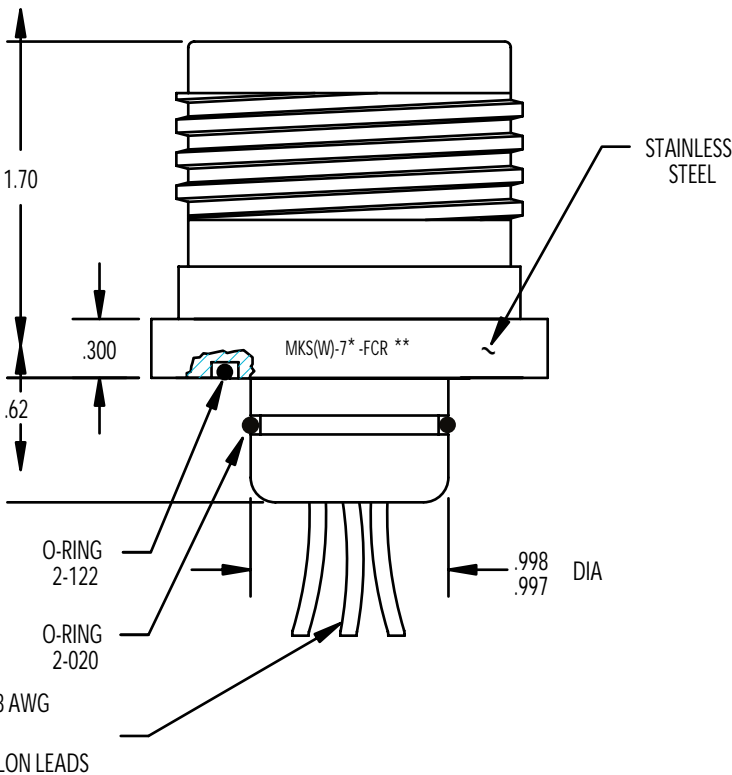
13#16



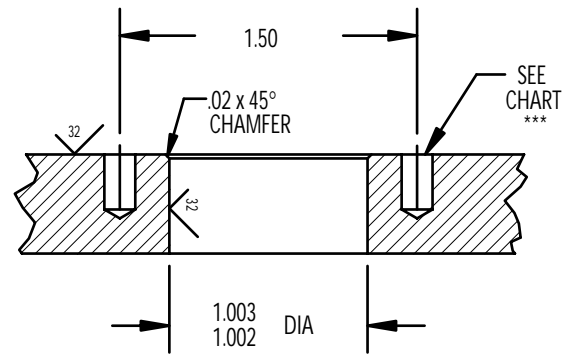
16#14



19#16



MOUNTING INSTRUCTIONS



MOUNTING TORQUE FOR BCR	not to exceed 225 in/lbs	MATED PRESSURE RATING (psi)	10,000
-------------------------	--------------------------	-----------------------------	--------

See pg. 9580 for SCP/SCR information.

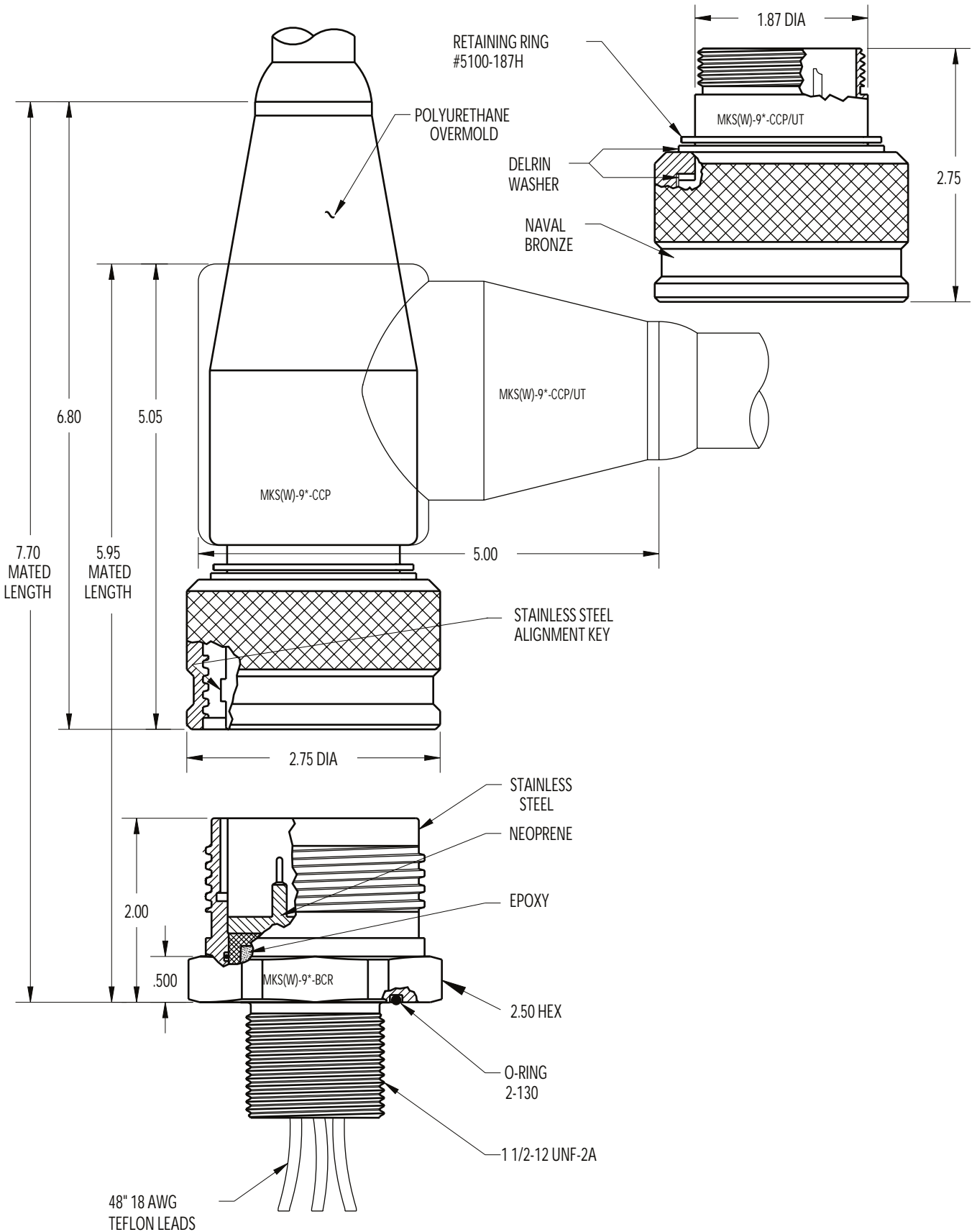
NOTE: CCP is not terminated to cable unless specified.

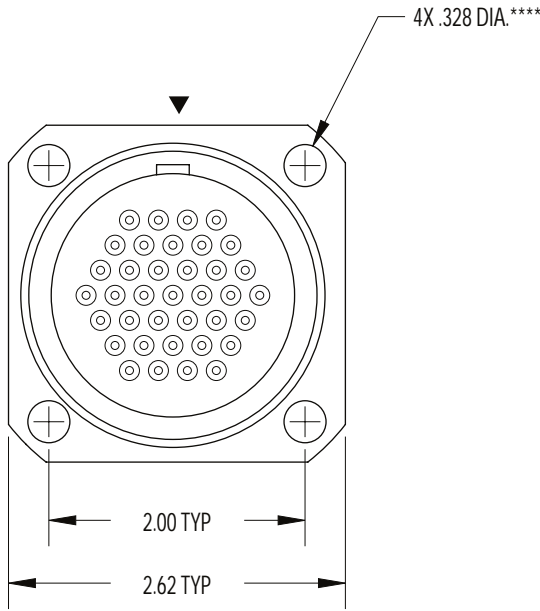
\* Please specify number of contacts.

\*\* Internal assembly same as MKS(W)-7\* -BCR (facing page).

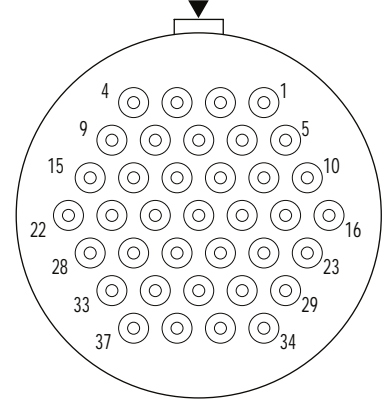
\*\*\* Blind tapped hole not to penetrate bulkhead, minimum full thread depth 2 times bolt diameter.

\*\*\*\* Modified M6 socket head cap bolts supplied with assembly.

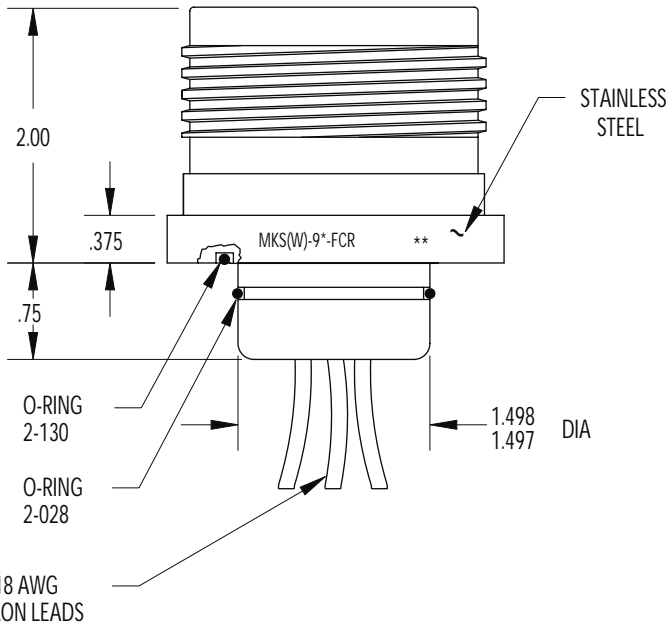




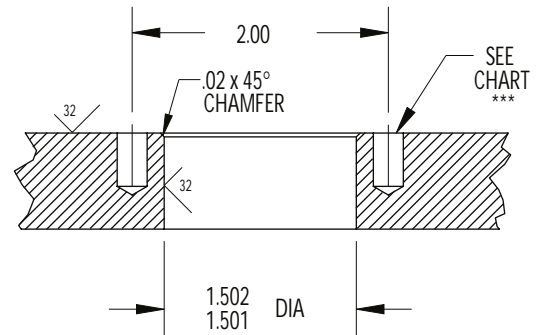
CONTACT  
CONFIGURATION  
(BCR FACE VIEW)



37#16  
SCALE 1:1



MOUNTING INSTRUCTIONS



MOUNTING TORQUE FOR BCR	not to exceed 335 in/lbs	MATED PRESSURE RATING (psi)	10,000
-------------------------	--------------------------	-----------------------------	--------

See pg. 9580 for SCP/SCR information.

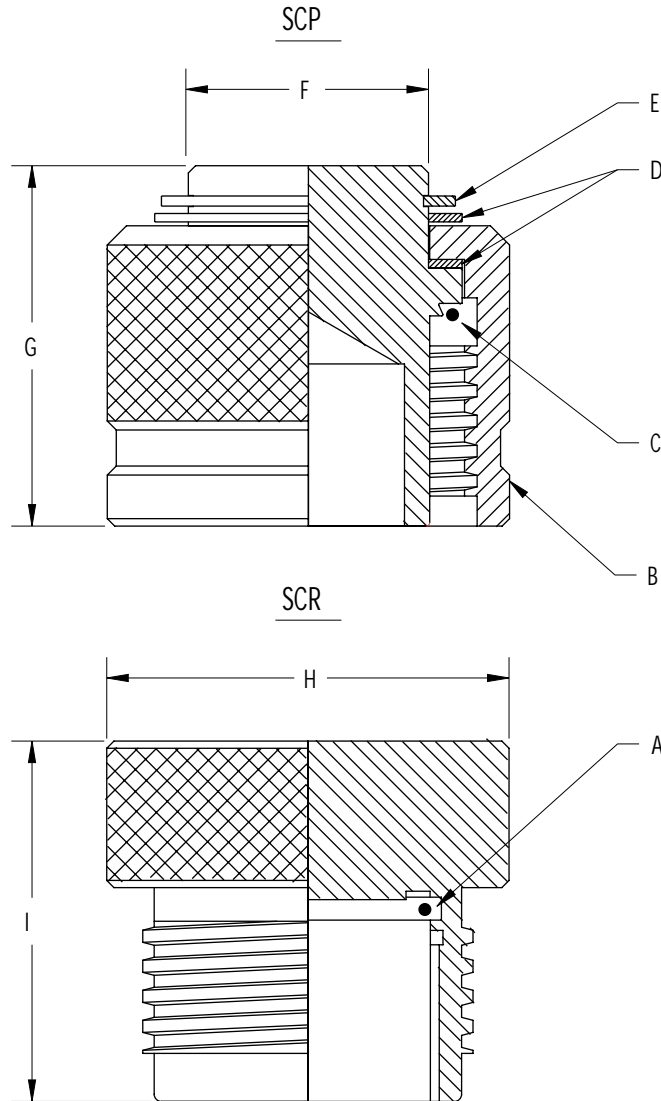
NOTE: CCP is not terminated to cable unless specified.

\* Please specify number of contacts.

\*\* Internal assembly same as MKS(W)-9\*-BCR (facing page).

\*\*\* Blind tapped hole not to penetrate bulkhead, minimum full thread depth 2 times bolt diameter.

\*\*\*\* Modified M8 socket head cap bolts supplied with assembly.



CONNECTOR SIZE	MKS-300	MKS(W)-500	MKS(W)-700	MKS(W)-900
A O-RING	5-682	2-022	2-028	2-032
B ENGAGING NUT	543115	472527	482623	483107
C O-RING	5-682	2-023	2-028	2-033
D DELRIN WASHER (2X)	453001	472501	482618	483101
E RETAINING RING	5100-43	5100-102	5100-125	5100-187
F DIA	.44	1.00	1.29	1.87
G	.75	1.50	1.87	2.00
H DIA	.71	1.67	2.00	2.67
I	.75	1.50	1.60	2.10
MATED PRESSURE RATING (psi)	10,000	2,000	2,000	1,000
* Metal shell SCP/SCR are not wet pluggable				
** 10,000 psi rated wet pluggable dummies available upon request.				
*** MKS-300-SCP LP (50 psi) available upon request.				

SCALE NONE